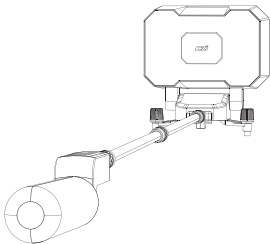


MP10E

Broadcast and Sound Pickup System

User Manual (V3.0)

May 11, 2023



Content

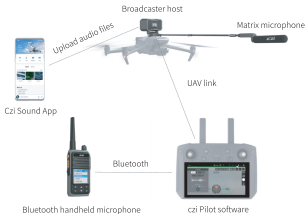
I. Disclaimer and Warning	1
II. Introduction to MP10E	2
III. MP10E Parameter	2
IV. Installation of MP10E.....	4
V. Introduction to Czi Sound App.....	5
VI. Introduction to the use of MSDK software of MP10E remote controller...	6
VII. Introduction to the use of Bluetooth handheld microphone	8
VIII. Firmware update	9

I. Disclaimer and Warning

1. Thank you for purchasing CZI smart products. The content mentioned in this manual is related to your safety, legal rights, and responsibilities. Before using this product, please read this manual carefully to ensure that the product is set up correctly. Failure to follow the instructions and warnings in this manual may cause harm to you and others. The final interpretation right of this manual and all related documents belongs to CZI. In case of any updates, no separate notice will be given. For the latest product information, please visit our official website www.gzczzn.com.
2. The maximum volume of MP10E exceeds 107 dB, please do not turn to the maximum volume at close range, otherwise, the damage caused by it shall be borne by the user!
3. Please install MP10E according to the installation in the manual, and then power on the UAV for the broadcaster after assembly. This product does not support hot plugging at the moment!
4. If it is windy, it is recommended to only insert one carbon tube to ensure safety. After installing the matrix microphone, please fly it carefully!

II. Introduction to MP10E.

MP10E is compatible with the DJI Mavic 3E and uses the PSDK link to achieve the same communication distance as the UAV. It combines the functions of a broadcaster, microphone, and police lights, creating a new era of aerial-ground communication for UAV.



III. MP10E Parameter

MP10E Parameter	
Weigh	≤140g
Main Engine size	90mm*80mm*82mm
Length of microphone pole	610mm
Power	≤15W
Power supply	PSDK_TypeC (12V--17.6V)
Speaker sound pressure	107dB@1m

Effective broadcasting distance	150m
Effective sound pick-up distance	10m
Microphone signal-to-noise ratio	67dB
Storage space	On-Body Memory (ROM):16 GB
Real-time code stream	8Kbps/16Kbps
Alarm lights	3 red lights, 3 blue lights, power 2 W, light angle 60°
Operating temperature	-10°C---40°C
Czi Sound App system support	Android7.0 and above / IOS13 and above
Bluetooth handheld microphone size1	190mm*60mm*30mm
Bluetooth handheld microphone weight	≤170g
Display color screen	1.8 inches
Bluetooth	Bluetooth 4.2, Band 2.400-2.4835 GHz, Transmitting power (EIRP) < 10 dBm
Battery voltage	Voltage 3.7 V, Capacity 2600 mAh
Endurance	3h
Charging	USB-C, 5V 2A

IV. Installation of MP10E

Installation of Matrix Microphone

Align the white dot on the microphone pole connector with the notch and tighten the nut after plugging in the male and female ends. Inserting two carbon tubes can obtain a farther sound pick-up distance. If it is windy, it is recommended to only insert one carbon tube to ensure safety. After installing the matrix microphone, please fly it carefully!

The installation is as follow:



Installation of the Broadcaster

Align the Type C port with the PSDK interface on the UAV, and insert it into the port, then tighten the hand screws on both sides. The installation is shown in the figure below:

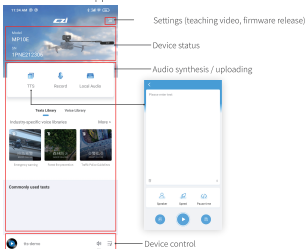


V. Introduction to Czi Sound App

The Czi Sound App is a mobile phone software specifically developed by CZI for audio synthesis, algorithm processing, and Bluetooth uploading of songs. It can be downloaded from the mobile application store or CZI official website, and can be installed on mobile phones running Android 7.0 or above or IOS 13 or above. The specific functions of Smart sound are as follows:

1. Synthesize audio files (including TTS, recorded audio, mixed audio, text library, music library, scanning local audio on the phone), and upload them to the broadcaster through Bluetooth. (Note: during the upload process, the corresponding audio enhancement and reverberation algorithm processing will be performed based on the broadcaster. Please be patient.)
2. Statue monitoring and control of Broadcaster
3. Firmware pushing. Pushing firmware updates for the broadcaster and handheld microphone. (Only the new products after 2022 are supported.)

The interface of Czi Sound App is as follow:

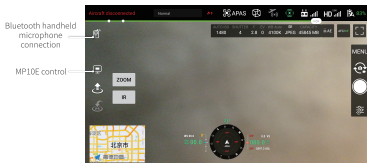


*For more detailed usage, please watch the teaching video.

VI. Introduction to the use of MSDK software of MP10E remote controller

Method of use:

1. First, download the latest czi Pilot from CZI official website, and install it on the remote controller in DJI. After installing MP10E, press the power of the UAV to turn on the remote controller.
2. Set the joystick mode, return altitude, loss of communication behavior and return point in Pilot 2 software, turn off forward-looking obstacle avoidance, and then slide up from the bottom of the screen to close dji pilot software.
3. Open the czi Pilot software, and the interface is as follows: Click the Bluetooth handheld microphone icon, search the serial number of the handheld microphone, and then connect HM10E-XXXXXX

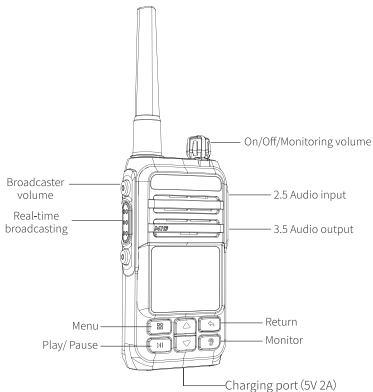




* For more detailed usage, please watch the teaching video.

VII. Introduction to the use of Bluetooth handheld microphone

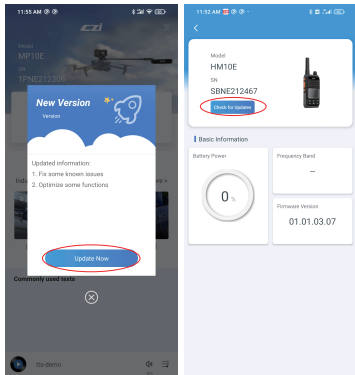
Switch on the handheld microphone with the knob in the upper right corner, and connect the handheld microphone with czi Pilot software.



* For more detailed usage, please watch the teaching video.

VIII. Firmware update

Czi Sound App will release the latest firmware to the Broadcaster and handheld microphone.



* For more detailed usage, please watch the teaching video.

ChengZhi Support
CZI technical support
www.gzczzn.com
Service Hotline: 400-008-8306

If you have any questions or
suggestions regarding the manual
Please send email to:
service@gzczzn.com

Printed in China